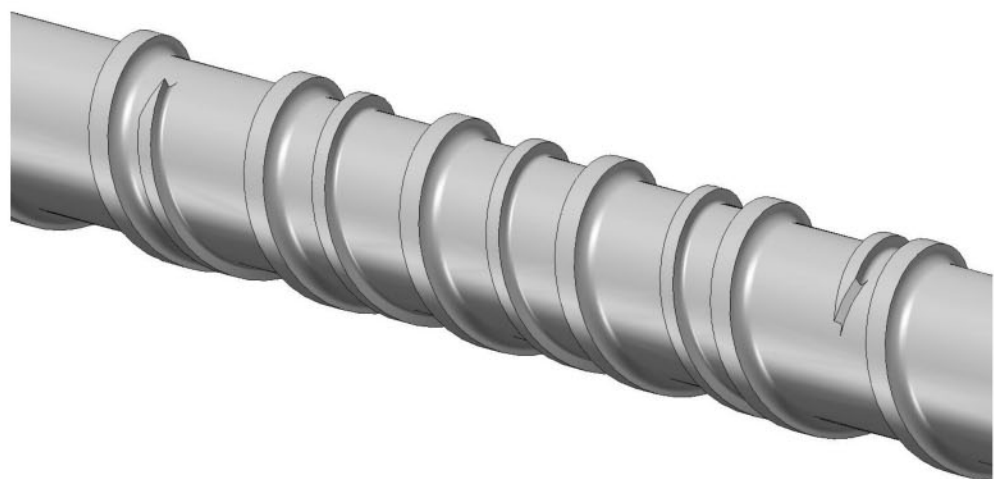


Typical **CONCOR** Mixer Options



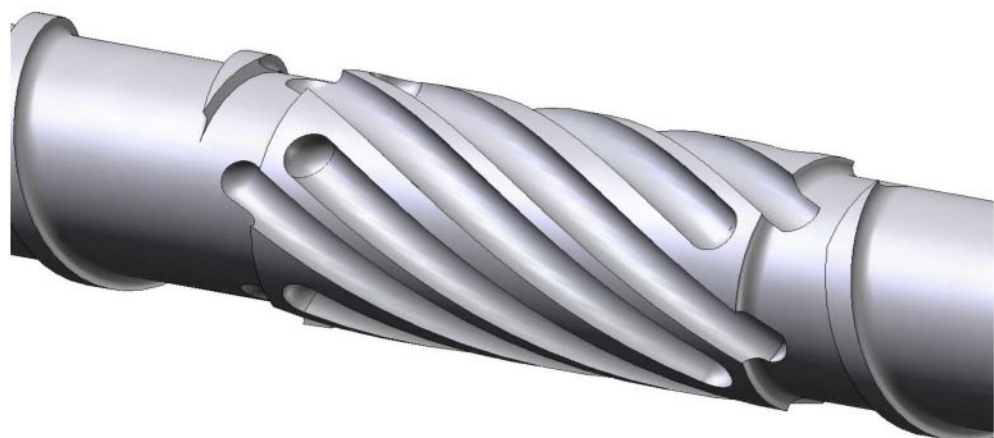
Dulmage Mixer

This is a high shear dispersive mixer used primarily for creating a good homogenous melt and color dispersion when processing unfilled nylon.



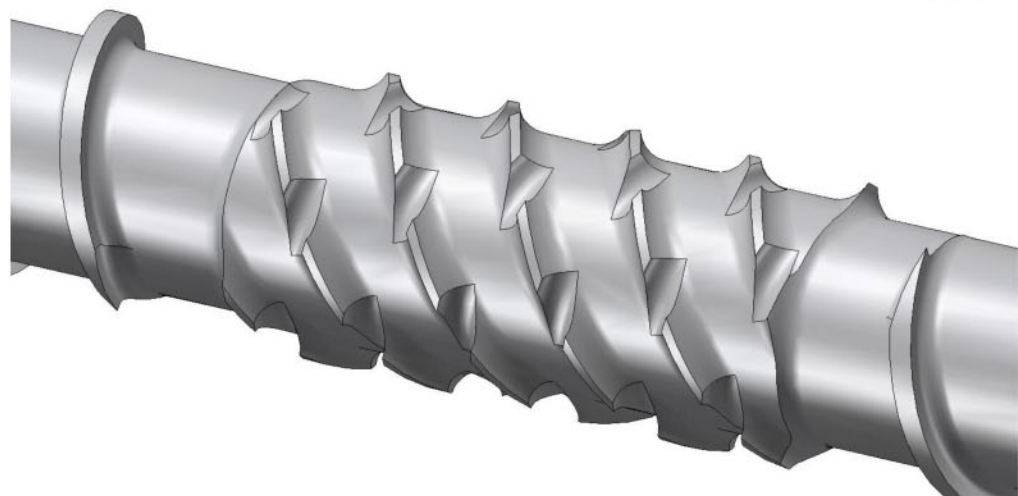
Concor Barrier

Provides improved melt quality and increases throughput rates an average of 10% - 20% for a wide range of materials.



Spiral Maddock Mixer

Dispersive type mixer for good homogenous melt for any non-shear sensitive materials such as Olefins.



Saxton Mixer

General purpose distribution mixer provides good melt quality and color mix for most materials.